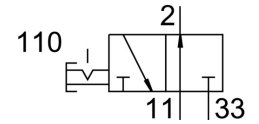


On off valve HE-G1/2-LO

Part number: 197134

FESTO



Data sheet

Feature	Value
Type code	HE
Structural design	Piston gate valve
Actuation type	Manual
Sealing principle	Soft
Exhaust air function	Without flow control option
Manual override	None
Symbol	00991672
Valve function	3/2, bistable
Operating pressure	1 bar ... 10 bar
C value	28.13 l/sbar
b-value	0.28
Standard nominal flow rate	6200 l/min
Operating medium	Compressed air as per ISO 8573-1:2010 [7:4:4]
Corrosion resistance class (CRC)	3 - High corrosion stress
Temperature of medium	-10 °C ... 60 °C
Ambient temperature	-10 °C ... 60 °C
Type of mounting	Line installation With through-hole
Mounting position	Any
Flow direction	Non-reversible
Product weight	1100 g
Pneumatic connection 1	G1/2
Pneumatic connection 2	G1/2
Pneumatic connection 3	G1
Seals material	NBR TPE-U(PU)
Housing material	Die-cast aluminum PBT